

## Standard Preparation 1800 mm Solid Wall Shelf with Brackets

ITEM # \_\_\_\_\_

MODEL # \_\_\_\_\_

NAME # \_\_\_\_\_

SIS # \_\_\_\_\_

AIA # \_\_\_\_\_

**132827 (WSS184N)**Solid wall shelf with brackets,  
1800mm

### Short Form Specification

**Item No.** \_\_\_\_\_

Made from 304 AISI stainless steel, 1mm in thickness.  
Upturned edges. Integral radiused rear upstand, h=30mm.  
Wall brackets allow the shelf to be positioned at different heights.

### Main Features

- Smooth surfaces, rounded corners, absence of edges and rear upstand facilitate cleaning operations.
- Sturdiness, stability and reliability of table accurately tested.

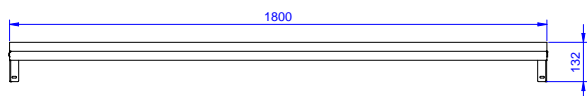
### Construction

- Made entirely in 304 AISI stainless steel, 10/10 in thickness; with a Scotch Brite finish.
- Upturned edges, 50 mm high, to guarantee operator safety.
- Incorporates a rear upstand to avoid spillage between wall and shelf.
- 100 mm upstand with 10 mm radiused corner and 13 mm deep, designed to be used against a wall.

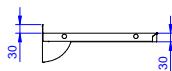
**APPROVAL:** \_\_\_\_\_

# Standard Preparation 1800 mm Solid Wall Shelf with Brackets

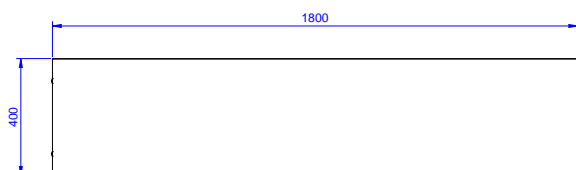
**Front**



**Side**



**Top**



## Key Information:

### External dimensions, Width:

**132827 (WSS184N)** 1800 mm

### External dimensions, Depth:

400 mm

### External dimensions, Height:

30 mm

### Upstand Dimensions, Height:

23 mm

### Upstand Dimensions, Depth:

2 mm

### Upstand Dimensions, Radius:

R=10

### Net weight:

8 kg

## Standard Preparation 1800 mm Solid Wall Shelf with Brackets

The company reserves the right to make modifications to the products without prior notice. All information correct at time of printing.

2025.05.22